



无锡市商务局  
Wuxi Municipal Bureau of Commerce

无锡市招商局  
Wuxi Investment Promotion Bureau

选择  
无锡  
SELECT  
WUXI  
2017



**中国大陆最佳商业城市（福布斯）**

One of Mainland China's Best Commercial Cities (Forbes)

**中国大陆创新能力最强城市（福布斯）**

One of Mainland China's Most Innovative Cities (Forbes)

**亚太地区十佳外商投资战略城市**

One of Top 10 FDI Strategic Cities in Asia-Pacific Region

**中国最宜居城市**

One of the Best Livable Cities in China

**中国最吸引人才城市**

One of Top 10 Attractive Chinese Cities for Talents

**中国最具国际生态竞争力城市**

One of China's Most International Ecological Competitive Cities



# SELECT WUXI 选择无锡

李运新 Sean Lee

花旗银行无锡分行行长  
Branch Manager of Citibank Wuxi

无锡在经济总量和人均收入等指标方面处于全国领先水平，拥有健康、活跃的金融生态环境和市场。在无锡市政府及相关监管机构的大力支持下，花旗无锡分行的业务稳步发展，势头良好。

Wuxi's GDP and GDP per capita rank high in recent years. Wuxi has active and favorable financial environment and market. With the strong support from Wuxi government and regulators, Citi Wuxi has gained steady progress and momentum.

习邦德 Derek Seaborn

阿斯利康（中国）副总裁  
Vice President Manufacturing of AstraZeneca (China)

过去20年，我们得到了无锡政府强有力的支持，并建立了良好的合作关系。

We have clearly had strong support and partnership from the local government over the last 20 years.

尚尔兵 Gwangwook Kim

卡特彼勒技术研发（中国）有限公司 总经理  
GM of Caterpillar R&D China

受益于当地发达的经济、便捷的交通、具有竞争力的运营成本，以及政府的大力支持，卡特彼勒研发中心在无锡落户后，经历了快速的发展，并获得了长远的成功。

Benefiting from its developed economy, convenient transportation, competitive cost and support from local government, Wuxi provides solid foundation for fast growth and a long-term success of our R&D center.

金光旭 Gwangwook Kim

SK海力士半导体（中国）有限公司 总经理  
President of SK Hynix Semiconductor (China)

无锡拥有便利的交通以及优秀的人才，电力供应非常稳定、工业用水也很充足，除了这些完善的工业配套，无锡还是一座宜居的城市，城市风貌非常整洁。

Wuxi has convenient transportation and ample talent pool. With comprehensive industrial infrastructure, such as stable power supply and abundant water supply, Wuxi is also a livable city with tiny and beautiful scenery.





2017

# CONTENTS

## 目录

# 01

01/04

### 数字无锡

- 无锡概况
- 无锡经济

### DATA

- General Introduction
- Economy

# 05

05/08

### 体验无锡

- 快捷交通
- 舒适生活

### EXPERIENCE

- Convenient Transportation
- Comfortable Life

# 09

09/24

### 产业无锡

- 高端装备制造
- 新一代信息技术
- 节能环保
- 生物医药
- 新能源与新能源汽车
- 新材料
- 金融服务
- 服务外包
- 文化创意
- 城市开发与旅游
- 医疗养老

### INDUSTRIES

- High-end Equipment
- Manufacturing
- New Generation of IT
- Energy Saving and Environmental Protection
- Bio-Science & Pharmaceuticals
- New Energy & New Energy Automobile
- New Materials
- Financial Services
- Service Outsourcing
- Cultural and Creative Design
- Urban Development & Tourism
- Medical Care & Elder Services

# 25

25/32

### 投资无锡

- 高效透明的政府服务
- 联系我们
- 配套齐全的载体

### INVESTMENT

- Highly-Effective and Transparent Government Services
- Contact Us
- Comprehensive Development Carriers



数字无锡  
Data

## 无锡概况 GENERAL INTRODUCTION

面积：4627.46平方公里  
Area: 4,627.46 square kilometers

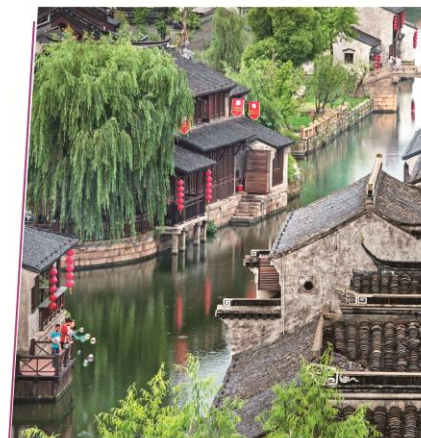
人口：652.9万  
Population: 6.529 million

区划：下辖2市（江阴、宜兴）  
5区（梁溪区、新吴区、锡山区、惠山区、滨湖区）

Administrative Divisions:  
2 county-level cities—Jiangyin and Yixing,  
5 districts—Liangxi, Xinwu, Xishan, Huishan and Binhu

气候：亚热带季风海洋性气候，四季分明，  
雨量充沛，温润宜人。

Climate: Sub-tropical monsoon maritime climate with  
four distinct seasons, abundant rainfall and mild  
temperature



数字无锡  
Data

无锡经济  
ECONOMY

2016年无锡市主要经济指标

Major Economic Indices of Wuxi in Year 2016

地区生产总值	9210.02亿元
Local GDP	USD 134 billion
人均地区生产总值	14.13万元
Per-capita GDP	USD 20,596
境内外上市公司	111家
Number of Public-listed Companies at Home and Abroad	111

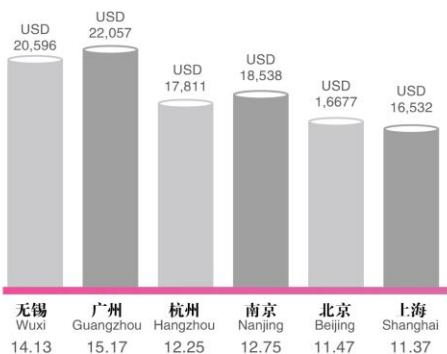
主要出口国家和地区  
Main Export Countries & Regions

美国	USA
香港	Hong Kong
日本	Japan
韩国	Korea
德国	Germany
印度	India
泰国	Thailand
澳大利亚	Australia
新加坡	Singapore
台湾	Taiwan



2016年无锡人均GDP与其他城市比较  
(人民币:万元)

Compared with other cities in Year 2016



截止2016年, 累计批准外商投资企业1.4万余家, 累计实际利用外资532.7亿美元。

Till 2016, more than 14,000 foreign-funded enterprises have been approved in Wuxi, with paid-in capital over USD 53.27 billion.

2016年, 无锡外贸进出口总额达698.92亿美元, 其中出口429.34亿美元, 进口269.58亿美元。

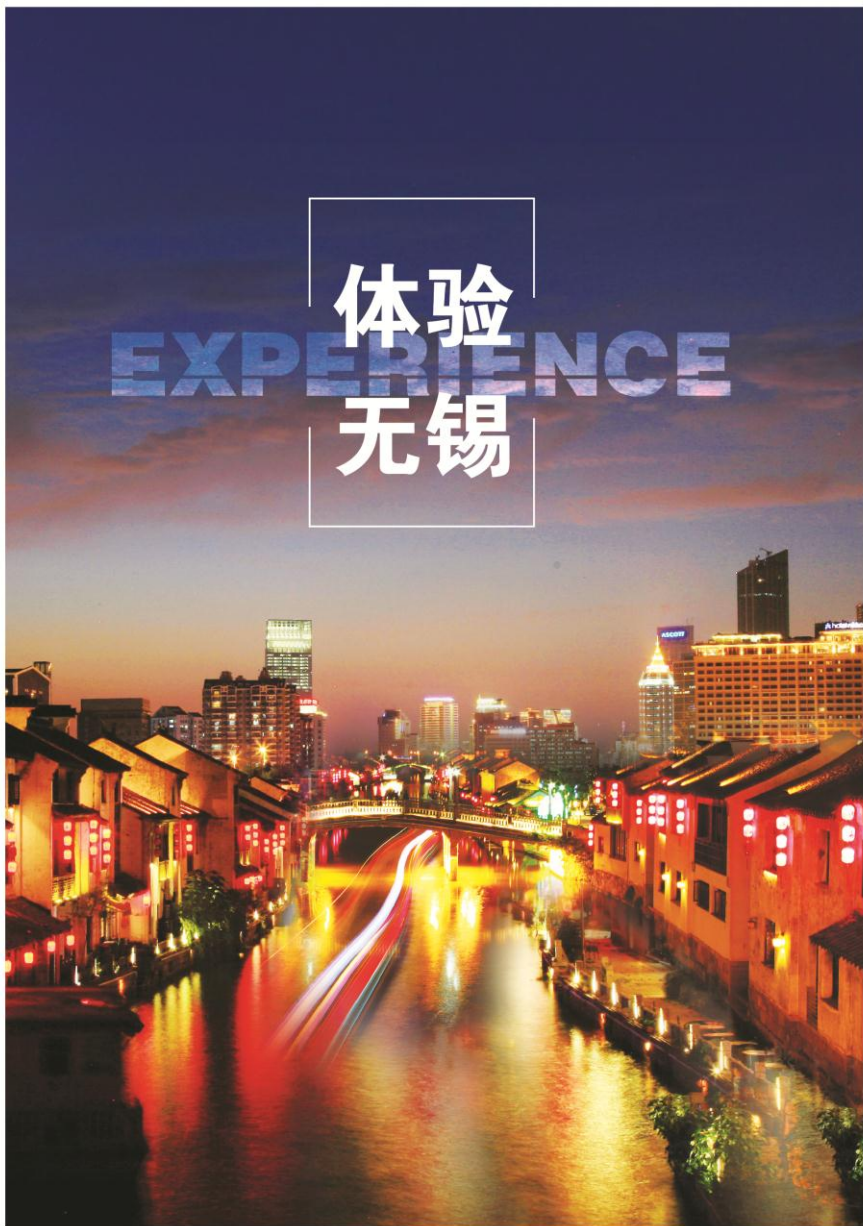
Wuxi's foreign trade maintained a stable development in Year 2016. The imports and exports totaled over USD 69.89 billion, as the exports soared to USD 42.93 billion and the imports reached USD 26.95 billion.

主要投资来源地  
Main Sources of Investments

香港	Hong Kong
韩国	Korea
台湾	Taiwan
英国	UK
美国	USA
加拿大	Canada
卢森堡	Luxembourg
瑞典	Sweden
法国	France
澳大利亚	Australia
德国	Germany
意大利	Italy

96家世界500强公司在无锡投资了184个企业(以《财富》及《福布斯》公布排名为准)。  
96 Top 500 multinational corporations have set up 184 subsidiaries in Wuxi (subject to the ranking lists of Fortune and Forbes).





# 体验 无锡

# EXPERIENCE

## 体验无锡 Experience

### 快捷交通 CONVENIENT TRANSPORTATION



无锡位于中国经济最发达的长江三角洲中心地带，是中国重要的区域性交通枢纽城市。  
Located in the core area of China's highly developed Yangtze River Delta, Wuxi is an essential regional transport hub city in China.

乘高铁到上海最快只需28分钟，到北京只需5个小时。  
It takes only 28 minutes from Wuxi to Shanghai and 5 hours from Wuxi to Beijing by high-speed railway.



2016年苏南硕放国际机场全年共通航34个国内主要城市、18个国际和港澳台地区城市的68条客货运航线，新引进九元航空、台湾华信航空、新加坡欣丰虎航、越南航空、捷星太平洋、天空吴哥航空等境内外航空公司。  
In 2016, Sunan Shuofang International Airport offers 68 passenger and cargo routes directly bound for 34 domestic and 18 international major cities. It has lately introduced overseas and domestic airlines including 9 Air, Taiwan Mandarin Airlines, Singapore Tiger Air, Vietnam Airlines, Jetstar Pacific Airlines and Sky Angkor Airlines.

无锡江阴港为国家一类水港，可以直航香港、新加坡、韩国釜山等国际重要海港。  
Jiangyin Port, as a Class-A water port in China, is navigable to major international ports like Hong Kong, Singapore and Pusan of South Korea.

无锡的轨道交通线网由5条线组成，其中轨道1号线、2号线已正式通车运行，3号线、4号线已开工建设。  
Wuxi metro network consists of 5 lines: Line 1 and Line 2 have been opened to traffic, while Line 3 and Line 4 is under construction.



体验无锡  
Experience

舒适生活  
COMFORTABLE LIFE



■ 凯悦、希尔顿、凯宾斯基、洲际、喜来登、日航、千禧等国际五星级酒店和无锡太湖国际展览中心等多功能商务、会展场所提供国际标准商务服务。

5-Star hotels, like Hyatt, Hilton Hotel, Kempinski Hotel, Intercontinental Hotel, Sheraton Hotel, Millennium Hotel, Nikko Hotel, etc., with multi-functional convention and exhibition facilities, such as Taihu International Expo. Center, can provide premium services for business affairs.

■ 环境优美、设施齐全的高级别墅和现代化公寓遍布锡城，可供外籍人士居住。

A wide range of luxury villas and modern apartments with comprehensive facilities and excellent environment are available for foreigners and investors.

■ 太湖国际学校、伊顿国际学校，韩国人学校等外资学校拥有良好的办学环境和优秀的师资队伍，为在锡外籍人士子女提供了从幼儿园至中学的全部课程。江南大学及各类大专院校每年输出大量的专业性人才。



Many international schools have been set up in Wuxi to satisfy the needs of foreign expatriates' children living in Wuxi, such as Taihu International School, Eton House Wuxi and Wuxi Korean School. The educational courses cover from kindergarten to high school. Jiangnan University and other colleges can provide a great number of fresh talents every year.

■ 高水准的本土医疗服务机构，以及和睦家无锡医疗保健中心、正在建设中的凯宜医院（由美国哥伦比亚太平洋集团出资）都致力为无锡及周边地区中高端人群和外籍人士提供具有国际一流水准的医疗服务。

High-standard local medical service institutions as well as the United Family Healthcare Wuxi Center, the under-constructed CAEYEE Hospital (invested by Columbia Pacific Group, Inc.), can offer world-leading medical services to high-to-medium income groups and foreigners in Wuxi and its surrounding areas.



■ 沃尔玛、家乐福、欧尚、麦德龙、乐购、宜家、百安居、无锡八佰伴、东方商厦、恒隆广场、海岸城、万象城等大型超市和购物中心遍布无锡。

Wal-Mart, Carrefour, Auchan, METRO, Tesco, IKEA, and B&Q have their supermarkets in Wuxi. Shopping malls like Wuxi Yaohan, Wuxi Commercial Mansion, and Hanglung Plaza, Coastal City and MIXC may spoil you for choice.

■ 无锡大剧院、兰桂坊、南长酒吧街、高尔夫球场等为高品质居住生活提供多样化的服务。

Wuxi Grand Theatre, Lan Kwai Fong, Nanchang Bar Street, and Golf Courses can provide diversified services for high-quality life.

■ 无锡旅游资源禀赋得天独厚，灵山胜境、鼋头渚、央视基地、古运河、华西村、宜兴竹海及多个免费开放的湿地公园，让居民有更多的机会亲近大自然、享受悠闲的假期。

Wuxi has rich tourism resources, e.g. the Lingshan Scenic Spot, the Turtle's Head Park, Yixing Bamboo Forest, CCTV Base, the ancient Grand Canal, Huaxi Village and many public wetland parks. These sceneries will help citizens get relaxed and refreshed during the holiday.







产业无锡  
Industries

## 高端装备制造 HIGH-END EQUIPMENT MANUFACTURING

无锡是中国装备制造业基地，涌现了双良集团、远东控股、威孚高科、巨力重工、一汽锡柴、透平叶片、开普动力、银环核电等一大批本土重点骨干企业，并成功吸引了卡特彼勒、康明斯、博世、斗山机械、久保田等世界500强企业来锡投资落户。

Wuxi is the equipment manufacturing base in China. A bunch of local key enterprises, represented by Shuangliang Group, Far East Holding Group, Weifu Company, Julu Heavy Industry, Wuxi FAW, WTB, Kipor and Yinhan Nuclear Power have sprung up in Wuxi. Meanwhile, many World Fortune 500 companies, represented by Caterpillar, Cummins, Bosch, and Kubota, have their subsidiaries running successfully in Wuxi.



无锡汽车及零部件产业的集聚程度较高，现有汽车整车、零部件生产企业超过1000家，拥有较完整的汽车工业产业体系。

Enterprises in automobile & auto parts industry are also highly clustered in Wuxi. There are over 1000 manufacturing enterprises in Wuxi and forms a complete industrial system.

目前，无锡拥有40余家智能制造和与机器人制造相关的企业，业务范畴涵盖国内外机器人产品代理、系统集成和机器人制造，例如大德重工，汉神重工，荷兰AWL机器人公司，同时捷普电子、天奇自动化、信捷电气也纷纷投入巨资开发机器人产品。

Currently, there are over 40 companies in Wuxi, which belong to intelligent manufacturing and robot manufacturing field, such as Dade Heavy Industry, Hanshen Heavy Industry, and AWL. Their business scopes cover domestic and foreign robot products agency, system integration and robot manufacturing. Meanwhile, Jabil Electronics, Miracle Automation, Xinjie Electric and other companies in Wuxi have made huge investment in developing robotic products.

依托苏南硕放国际机场、宜兴通用机场和江阴通用机场，无锡逐步建设“核心基地+服务区+生产区”航空产业集中区，道尼尔、皮拉图斯、腾达（TLD）集团、中航工业等全球知名航空产业翘楚相继落户。

Based on Sunan Shuofang International Airport, Yixing Universal Airport & Jiangyin Universal Airport, a complete aviation industrial chain, including Core Industrial Base + Service Area+ Manufacturing Area, has been basically setting up with the settlement of several global well-known aviation companies, such as Dornier, Pilatus, TLD, AVIC and other world-famous enterprises.





产业无锡  
Industries

## 新一代 信息技术

NEW GENERATION OF IT

### IC产业整体规模居全国第二

IC Industry Scale of Wuxi ranks No.2 in China

### IC晶圆规模居全国第二

IC Wafer Scale of Wuxi ranks No.2 in China

### IC封装规模居全国第三

IC Packing Scale of Wuxi ranks No.3 in China

### IC设计规模居全国第四

IC Design Scale of Wuxi ranks No.4 in China



无锡是中国微电子工业的摇篮，是中国重要的微电子产业发源地和生产基地。目前，全市集聚了200家具有国际先进技术水平微电子企业，形成了一条涵盖设计、制造、封测、配套支撑等领域的完整产业链。

Wuxi is the cradle and also an important production base of China's micro-electronics industry. It has attracted over 200 world-class micro-electronics enterprises and forms a complete industrial chain ranging from designing, manufacturing, to packaging and testing.

### 重点企业 Key Enterprises

集成电路设计类：无锡华润矽科微电子有限公司、无锡美新半导体有限公司、中科芯集成电路股份有限公司、中国电子科技集团公司第五十八研究所

IC Design: Wuxi China Resources Semico, Wuxi Meixin Semiconductor, China Key System & Integrated Circuit, China Electronics Technology Group Corporation No. 58 Institute.

晶圆制造类：SK海力士半导体（中国）有限公司、华润微电子有限公司

Wafer Fabrication: SK Hynix Semi-conductors, China Resources Micro-electronics.

封装测试类：海太半导体（无锡）有限公司、英飞凌科技（无锡）有限公司、无锡华润安盛科技有限公司、江苏长电科技股份有限公司（江苏新潮集团全资子公司）

Packaging & Testing: Hitech Semiconductor, Infineon Technologies, Wuxi China Resources Micro-Assembly Technology, Changjiang Elec. Tech. (Jiangsu Xinchao Group).

配套支撑类：无锡中微掩模电子有限公司

Accessory Support: Wuxi Zhongwei Mask Electronics



长电科技（江苏新潮集团全资子公司）于2014年成功收购新加坡上市的全世界第四大集成电路封装测试公司STATS ChipPAC（星科金朋），并被中国电子报评选为2015中国集成电路突出贡献企业。

Wuxi Changjiang Elec. Tech. acquired STATS ChipPAC, the world's 4th largest integrated circuit packaging & testing company listed in Singapore in 2014, and was awarded the most contributed integrated circuit packaging & testing company in 2015 by China Electronics News.

### 特色载体 Featured Parks

国家集成电路（无锡）设计中心

National Integrated Circuit (Wuxi) Design Center

长电科技集成电路封测科技创新产业园

Changjiang Elec. Tech. Integrated Circuit Packaging & Testing Innovation Industrial Park

无锡国家集成电路设计产业化基地

Wuxi National Integrated Circuit Design Industrialization Center (WXICC)

无锡是中国物联网产业基地和国务院批复的国家传感网创新示范区，基本形成了包括感知、网络通讯、处理应用、关键共性、基础支撑在内的物联网产业链，其中智能传感系统产业集群被认定为全国首批、江苏省唯一的创新型产业集群。

As the National Industry Base of the Internet of Things (IoT) and the National Innovation Demonstration Area of Sensor Networks approved by the State Council, a complete industrial chain, consisting of sensing technology, network communication, processing application, key generic technology and fundamental support, has been established. Among them, the cluster of smart sensing systems is acknowledged as the first of its kind in China and the only one in Jiangsu Province.

截止2016年底，全市各类物联网企业已达3000家。

By the end of 2016, more than 3,000 IOT companies have been established in Wuxi.

2016

引进物联网企业 334 家 Newly-introduced IOT companies: 334

新申请物联网领域专利 3000 件 IP applications for IOT Projects: 3,000

制修订国际、国家和行业标准 101 项 Made and revised international and national industry standards: 101

Year 2016

全市组织实施的物联网应用示范项目已超过300个，涵盖经济社会发展各领域。

Over 300 IoT demonstrative projects have been applied in the City covering all fields of social and economic development.

**2016无锡物联网十大应用案例**  
TOP 10 IoT Application Samples at Wuxi City (2016)

- 环境监控物联网应用工程  
IOT Application Project of Environmental Monitoring
- 汽车电子标识应用示范工程  
Application Demonstration Project of Automobile Electronic Identification
- 中科芯安全通讯系统  
Secure Communication System of China Science Core
- 博耳电管家  
Boll Electric Housekeeper
- 哲勤冷链监测系统  
Zheqin Cold Chain Monitoring System
- 蓝深远望工业物联网能源监控系统  
Lanshen Industrial IOT Energy Monitoring System
- 医联体信息平台  
Information Platform of Regional Medical Treatment Association
- 华润智能供气系统  
China Resource Intelligent Gas Supply System
- 富源能量感知优化系统  
Fuyuan Energy Awareness and Optimizing System
- 知谷·航旅iFLYMATETM平台  
iFLYMATETM Platform

无锡围绕“互联网+”、“智能制造”、“大数据”、“云计算”等主题，以城市云计算、太湖云、华云等重点基础设施平台为引领，重点发展云计算硬件设备、云计算基础软件、云计算服务平台、云计算行业应用和云计算生态系统，助推“智慧无锡”建设。

Under the themes of "Internet+", "Intelligent Manufacturing", "Big Data" and "Cloud Computing", led by current key infrastructure platforms, such as City Cloud, Taihu Cloud and China Cloud, Wuxi focuses on the development of hardware devices, basis software, service platform, application and eco-system, to accelerate the construction of Smart Wuxi.



**无锡软件园获批  
“江苏省云计算特色产业园”称号**

Wuxi Software Park  
"Park on Cloud Computing of Jiangsu Province"

**江阴高创园获批  
“江苏省智能电网特色产业园”称号**

Jiangyin High-tech Innovation Park  
"Park on Smart Grid of Jiangsu Province"

**无锡惠山软件园获批  
“江苏省互联网产业园”称号**

Wuxi Huishan O-Park  
"Internet Park of Jiangsu Province"

**产业无锡  
Industries**

**节能环保  
ENERGY SAVING AND  
ENVIRONMENTAL  
PROTECTION**



目前，无锡拥有环保企业2000多家、配套企业4000多家，环保产品以水处理见长，水处理设备和技术已达国内领先水平，国内市场占有率达40%。同时，着力构建涵盖大气污染治理、固体废物处理处置、减震降噪、专用药剂、环保检测仪器仪表、配套类等的环保工业体系。

Currently, there are over 2000 environmental protection enterprises and over 4000 supporting enterprises in Wuxi. Among their products, water treatment equipments have the best performance and take up 40% of the national market. Technologies of water treatment equipments reach the domestic leading level. Meanwhile, Wuxi has put great effort in building a industrial system of environmental protection covering atmospheric contamination treatment, solid waste disposal, noise and vibration reduction, specialized medicament, testing instruments and meters, the supporting products and etc.

无锡逐步形成了以环科园为主体的环保产业研发核心区；以高腾环保产业园为主体的环保装备制造区；以中国宜兴国际环保城为主体的交易物流区。

Three new cluster zones in environmental protection industry have gradually formed in Wuxi: the R&D core zone of environmental protection industry with Yixing Industrial Park for Environmental Science & Technology as the main part; the environmental protection equipment manufacturing zone with Gaocheng Environmental Protection Industrial Park as the main part; and the transaction logistics zone with Yixing (China) International Environmental Protection Zone as the main part.

无锡先后与德国、丹麦、芬兰、美国、新加坡、韩国等9个国家建立了技术对接中心，实施国际技术合作项目34个。德国威泰克、芬兰EFCC、北控水务、中节能、百事德等一批海内外知名节能环保企业机构相继落户。

Wuxi has established technology docking centers with Germany, Denmark, Finland, the USA, Singapore, Korea and other 3 countries and carried out 34 international technology cooperation projects. A batch of famous energy conservation and environmental protection enterprises have settled down in Wuxi, such as Wetech of Germany, EFCC of Finland, Beijing Enterprises Water Group, CECEP and B-tohin Machine.

**无锡高新技术开发区节能产品集聚区：以机械类节能装备、现代节能家电及办公设施为主导**

Energy-saving Products Cluster Zone of Wuxi High-tech Development Zone: machinery energy-saving equipments, modern energy-saving household appliances and office facilities.

**宜兴节能产品产业集聚区：以节能现代环保产品、节能建材产品为主导**

Yixing Energy-saving Products Cluster Zone: modern energy-saving & environmental protection products, energy-saving construction materials.

**江阴节能产品产业集聚区：以溴化锂制冷机组、节能风能电机和高效滤波智能控制技术产品及产品为主导**

Jiangyin Energy-saving Products Cluster Zone: lithium bromide refrigeration units, energy-saving wind power motor, efficient wave-filtering smart control technology and products.

**锡山经济技术开发区节能产品产业集聚区：以气源、水源、地源热泵机组、LED新光源为主导**

Energy-saving Products Cluster Zone of Xishan Economic Development Zone: new lighting resources, such as gas, water and ground heat pump units, as well as LED.

产业无锡  
Industries

## 生物医药 BIO-SCIENCE & PHARMACEUTICALS



目前，全市拥有近500家生物医药企业，其中药品生产企业47家，医疗器械生产企业188家。阿斯利康、纽迪西亚、辉瑞制药、百时美施贵宝、安利等国际知名企业在这里落户，药明康德、傲锐东源、博雅干细胞等一大批由海外归国人才创立的企业在这里生根发展，其中50%以上是研发类企业，涵盖了单克隆抗体、蛋白质药物、小分子药物、动物实验等多个领域。无锡逐渐成为在生物制药、医疗器械、诊断试剂等领域具有特色和影响力的产业集聚区。

Currently, there are about 500 biopharmaceutical companies in Wuxi, 47 pharmaceutical manufacturers and 188 medical device manufacturers. International famous companies such as AstraZeneca, Nutricia, Pfizer, Bristol-Myers Squibb and Amway have been settled here. A number of start-up companies by returned overseas scholars, such as Wuxi AppTec, OriGene, Boya Life, have set their roots here, with 50% of them as R&D enterprises in various fields including monoclonal antibody, protein pharmaceuticals, small molecule drugs and animal experiment. Wuxi has gradually become a distinctive and influential industry gathering area in biological medicine, medical equipment, and diagnostic reagent.

同时，无锡正致力于将生物技术融入现代农业，努力实现高效规模农业与高端生物农业的互动发展，全力推动农业转型升级。

In the meantime, Wuxi is devoted to applying biological technologies into modern agriculture and health industry, in order to achieve interactive development of efficient massive agriculture and high-end bio-agriculture and to promote the upgrading of agricultural industry.



**无锡新吴区生命科技园 (Si-Park) :** 影像医疗、高值耗材、体外诊断、智慧医疗、肿瘤治疗、医药物流、康健服务等七大核心领域

Life Science Industrial Park in Wuxi Xinwu District (Si-Park): Seven core sectors include medical diagnostic imaging systems, high-value consumables, in vitro diagnosis, smart healthcare, oncotherapy, pharmaceutical logistics, and rehabilitation services.

**江苏无锡 (惠山) 生命科技园 (L-Park) :** 现代医疗器械、现代数网医疗与健康照护

Jiangsu Wuxi Huishan Life Science & Technology Park (L-Park): Modern pharmaceutical equipment, digital network medical treatment and healthcare.

**无锡 (马山) 国家生命科学院 (Bio-Park) :** 现代生物医药CRO和集医疗、保健、康复为一体的国际生命健康产业

Wuxi Mashan National Life Science Park (Bio-Park): Modern bio-pharmaceutical CRO, international life and health industry with integration of medical treatment, health care and rehabilitation services.

**江阴高新区生物医药产业园 :** 涵盖研发、中试、生产、销售、物流等环节的生物医药全产业链

Life Science Industrial Park in Jiangyin Hi-tech EDZ: Its biomedical industry chain covers R&D, semi-works, production, sales, logistics, etc.

产业无锡  
Industries

## 新能源与 新能源汽车 NEW ENERGY & NEW ENERGY AUTOMOBILE



我市现有新能源汽车整车生产企业四家，分别是常隆客车、上汽商用车无锡分公司、一汽客车及华策汽车。目前已有多家企业进入充换电设施的建设和运营领域，已建成充电站（桩群）200多个，布设充电桩3000多个，基本满足了目前我市已有新能源汽车充（补）电的需要。

Currently, there are four new energy automobile manufacturing companies in Wuxi: Alfa Bus, Saic Motor Commercial Vehicle Wuxi Branch, FAW Bus and Coach as well as Wuxi Huace Automobile. Meanwhile, there are many companies in Wuxi which have been involved in the field of construction and operation of electric charging facilities. More than 200 charging stations with totally 3000 charging piles have been settled in different places in Wuxi, basically meeting the needs of the existing new energy cars.

无锡是中国重要的光伏产业基地、国家新能源科技兴贸创新基地，培育和引进了海润、国电、高佳、昱辉阳光、隆基硅材料等一大批优质企业，产品覆盖太阳能光伏产业链的各个环节，确立了无锡光伏产业在全国的领先地位。

As one of China's important photovoltaic industrial bases and National Innovation Base of Accelerating Trade with New Energy Technology, Wuxi has cultivated and attracted Hareon, Guodian, Konca, ReneSola, LONGi and other leading enterprises. Its complete industrial chain has made Wuxi a forerunner of China's PV Solar industry.

无锡是智能风机生产商的集聚地，涌现了远景能源、天奇风电零部件、吉鑫风能等为代表的优秀企业。

Wuxi has been the industrial cluster of intelligent wind power engine manufacturers, represented by ENVISION, Jixin Wind Energy Technology and Miracle Win-power Components.



产业无锡  
Industries

## 新材料 NEW MATERIALS

无锡市新材料重点园区规模以上企业共有 300 多家，产业发展处于全省第一梯队。

There are more than 300 enterprises above designated size in the industry of new materials, and the industrial volume is on the top of Jiangsu Province.

**新型化工材料：**新型化工材料是无锡市新材料支柱产业之一，主要包括特种树脂、合成橡胶、工程塑料、绝缘材料等产品，代表企业有兴达泡塑、朗盛（无锡）化工、三木化工、江苏雅克科技、洪汇新材料等。

New-type Chemical Materials: New-type chemical material is one of the pillar sectors, with products in special resins, synthetic rubber, engineering plastics and insulation materials.

Representing Companies: Xinda Foam, LANXESS Chemical, Sanmu Group, Yoke Technology, Honghui New Materials Technology

**新型金属材料：**主要包括高性能合金、不锈钢、金属复合材料等产品，拥有多个大型龙头企业和行业代表，如江阴兴澄特钢、江苏亚太轻合金、银邦铝业、法尔胜等。

New-type Metal Materials: Include products in high-performance alloy, stainless steel and metal composite materials.

Representing Companies: Jiangyin Xingcheng Special Steel Works, Asia-Pacific Light Alloy Technology, Yin bang Clad Materials, Fasten Group, etc..

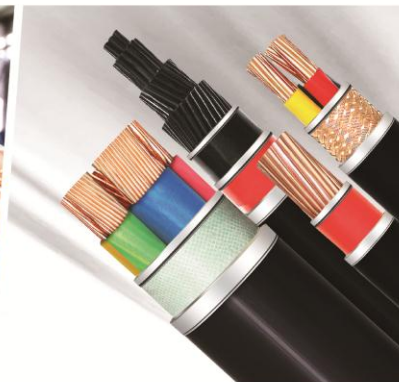
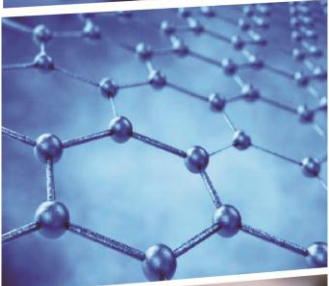
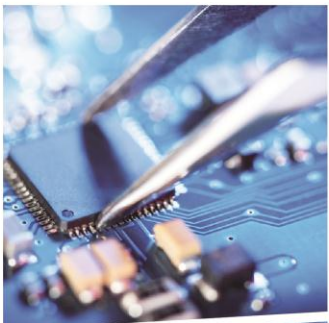
**电子信息材料：**以光电子材料为代表，主要产品包括光电玻璃、LED等光电子器件，以及半导体、集成电路材料等，代表企业有绿点科技、夏普电子、元亮科技、新广联科技等。

Electronic Information Materials: Led by optoelectronic materials, such as optoelectronic glass, LED components, and semi-conductors, IC materials.

Representing Companies: Green Point Technology, Sharp Electronics, Union Light Technology, Xinguanglian Technology

**新能源材料：**起步较早、发展基础较好，特别是在光伏材料方面具有一定特色，在动力电池材料方面也在积极发展，代表企业有无锡尚德、国电光伏、东恒新能源等。

New Energy Materials: Wuxi starts early in China and has a solid industrial foundation, especially in materials for PV and power batteries. Representing Companies: Wuxi Suntec, GD Solar and Dongheng New Energy.



**光纤光缆材料：**宜兴市是中国电线电缆产业的聚集地，重点企业有江南电缆、中超电缆、远东电缆、信越（江苏）光棒等。

Optical Fiber & Cable Materials: Yixing City is the cluster of China's optical fiber and cable industry.

Representing Companies: Jiangnan Cable, Zhongchao Cable, Far East Cable and Shin-Etsu (Jiangsu) Cable Bar.

### 特色载体 Featured Parks

#### 江苏江阴新材料（金属）产业园

Jiangsu Jiangyin Harbour New Metal Material Industrial Park

#### 江苏宜兴光电产业园

Jiangsu Yixing Photoelectric Industrial Park

#### 江苏宜兴新材料（陶瓷）产业园

Jiangsu Yixing Ceramic New Material Industrial Park

#### 无锡光电新材料科技园

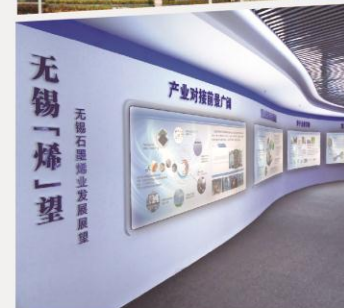
Wuxi Photoelectric New Material Science & Technology Park

#### 锡山经济技术开发区新材料产业园

New Materials Industrial Park of Xishan Economic Development Zone

2015年8月，无锡惠山石墨烯新材料特色产业基地被认定为2015年第一批国家火炬特色产业基地，并落户无锡石墨烯产业发展示范区。示范区围绕三大研发应用领域积极引进石墨烯企业和团队近30个，应用型企业10余家，已跃升成为全球石墨烯新材料应用领域企业和团队入驻数最多的园区。

In August 2015, Wuxi Graphene Industry Development & Demonstration Zone was certified as the 1st batch of industrial bases under China Torch Program in Year 2015. Currently, the Zone ranks as the world largest industrial park in the area of graphene application with over 30 research teams and more than 10 application enterprises.



产业无锡  
Industries

金融服务  
FINANCIAL SERVICES

无锡是国内首个拥有金融全牌照平台的地市级城市，本土企业上市公司数量和募集资金连续多年在全国地级市中居于首位；2013年无锡获批苏南现代化建设示范区商业保理试点城市。

Wuxi is the first prefecture-level city in China with a complete financial platform of all licenses, and has been ranked as No.1 among all prefecture-level cities for many consecutive years in terms of the amount of public companies and funds raised. In 2013, Wuxi was approved as a Commercial Factoring Pilot City in South Jiangsu Modernization Demonstration Zone.



2016年，全市新增上市公司17家，上市公司总数已达111家（境内61家，境外50家）。

In 2016, Wuxi's public companies increased by 17 to reached a total amount of 111 (domestic listed companies 61, overseas listed companies 50).

7家外资银行的集聚，丰富了无锡的金融服务市场。

7 foreign banks strengthen the financial service market of Wuxi.



14家外资融资租赁、3家外资商业保理企业的相继落户以及外资保险的快速的发展也为无锡金融业的发展注入了强劲的动力。

The establishment of 14 foreign-funded financial leasing companies and 3 foreign-funded commercial factoring companies in succession, together with the fast development of foreign capital insurance, brings a driving force to the development of Wuxi's financial industry.

产业无锡  
Industries

服务外包  
SERVICE OUTSOURCING

2016年，全市拥有服务外包企业1641家，从业人员达18.36万人。

By the year of 2016, Wuxi has 1641 service outsourcing enterprises with over 183,600 professionals.

作为“中国服务外包示范城市”、全球离岸外包最安全城市之一，无锡已初步形成功能较为齐全、配套较为完善的服务外包产业集聚地，吸引了美国微软、IBM、甲骨文、惠普、福瑞博德，日本NEC、NTTDATA、索尼、富士通，印度NIIT，墨西哥萨孚凯以及文思海辉、软通动力、中软、东软、博彦等一批国内外重点服务外包企业落户。

As one of China Service Outsourcing Demonstration Cities and one of Global Offshore Service Outsourcing Safest Cities, Wuxi has initially formed an industry cluster with complete functioning and supporting service, which have attracted a number of leading service outsourcing companies in China and abroad, such as Microsoft, IBM, Oracle, HP, Exigen and Freeborders from the US, NEC, NTTDATA, SONY and Fujitsu from Japan, NIIT from India, Softtek from Mexico, and Pactera, iSoftStone, CS&S, Neusoft, Beyondsoft, etc.

软件外包、IC设计外包、创意设计外包、生物医药研发外包、金融后台服务等重点领域服务外包业务已拓展到美国、日本、欧洲、香港等97多个国家和地区，美国已成为我市最大的离岸外包业务市场。

Service outsourcing business of major fields, such as software outsourcing, IC design, DE design, biological medicine research and financial back-office services etc., cover 97 countries and regions including the US, Japan, Europe and HK, with US as the biggest market.





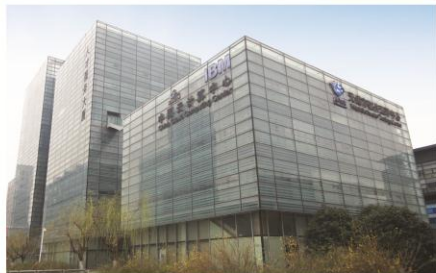
**特色园区  
Featured Parks**

无锡（国家）软件园 (iPark)  
Wuxi National Software Park (iPark)

山水城科教产业园 (K-Park)  
Shanshui City Science & Education Industrial Park (K-Park)

惠山软件园 (O-Park)  
Huishan Software Outsourcing Park (O-Park)

无锡生物医药研发服务外包区  
Wuxi Bio-Pharmaceutical R&D Outsourcing Service Park  
(Bio-Park)



我市服务外包业务涵盖软件研发外包、集成电路设计外包、生物医药研发外包、工业设计外包、影视动漫创意设计外包、检验检测外包、物联网信息服务等多个领域，代表服务外包高端业态的KPO项目业务约占全市总量的30%。

Wuxi's service outsourcing business covers various fields, such as Software Development, IC Design, Biological Medicine, Industrial Design, Animation Design, Test & Examination, IOT Information Service etc., among which KPO (Knowledge Processing Outsourcing) projects, a high-end level of the service outsourcing industry, accounts for 30% of the city's total scale.

KPO代表企业：药明康德、企源投资、弘和药物研发、贝卡尔特（中国）技术研发、同捷汽车设计、德冠生物科技、捷太格特科技研发中心（无锡）、好莱坞（中国）数码艺术研发中心、好芳德药业、迈康升华医药科技等。

Famous KPO enterprises: Wuxi AppTec, Qiyuan Capital, ChemFuture PharmaTech, BEKAERT China R&D Center, TJI, Colotex, JTEKT R&D Center(Wuxi), Hollywood (China) Digital Arts R&D Center, Howfond Biopharma, PharmaAdvance etc.

产业无锡  
Industries

**文化创意  
CULTURAL AND  
CREATIVE DESIGN**

作为国家知识产权示范城市，无锡为创意设计的诞生提供了优渥的土壤。全国首家国家级工业设计园——无锡国家工业设计园形成了以产品设计、建筑设计、艺术设计、IC设计、模具设计、工业计算机应用设计、精密零件设计、汽车及工装设计为内涵的完整的工业设计及研发的产业格局。

As National Intellectual Property Demonstration City, Wuxi provides excellent and fertile soil for the development of creative design. Wuxi National Industrial Design Park, as China's first state level industrial design park, has formed a complete industrial design and R&D structure with a connotation of product design, architecture design, art design, IC design, model design, industrial computer application design, sophisticated parts design and automobile industrial equipment design.

无锡国家数字电影产业园集聚了星皓影业、凤凰联动、娱跃影业、Base FX、工夫影业、诺华视创等400余家国内外知名影视及制作企业入驻，累计完成《西游记之三打白骨精》、《捉妖记》、《寻龙诀》、《星球大战7》、《变形金刚4》、《武媚娘传奇》、《美国队长》、《忍者神龟》等450余部影视剧项目拍摄及制作。

Wuxi National Digital Film Industrial Park (Wuxi Studio) now has a cluster of over 400 domestic and international renowned shooting companies and film companies such as FilmkoFilm, Fonghong Media, Yuyue Film, Base FX, CKF Pictures and NovaFilm. Wuxi studio has completed the shooting and production work of over 450 film and TV dramas like *The Monkey King II*, *Monster Hunt*, *The Ghouls*, *Stars Wars: The Force Awakens*, *Transformers: Age of Extinction*, *The Empress of China*, *Captain America*, *Ninja Turtles*.



产业无锡  
Industries

## 城市开发与旅游

URBAN DEVELOPMENT  
& TOURISM

近年来，无锡的城市开发随着经济的快速发展被迅速带动起来，日本积水房屋、新加坡吉宝置业、香港九龙仓、华润等知名地产企业纷纷到无锡投资开发。

In recent years, the urban development of Wuxi, driven by the rapid economic development, has been growing fast. Some well-known real estate developers like Japanese Sekisui House, Singaporean Keppel, Hong Kong's Wharf Holdings and China Resources have invested their projects in Wuxi one after another.



英特宜家亚洲首家大型购物中心、恒隆广场首家中国二线城市旗舰级购物中心、兰桂坊不夜城、万象城、万达文化旅游城等重大项目纷纷落户无锡。

A number of major projects also have been established in Wuxi, such as the first large-scale shopping mall of Inter IKEA in Asia, the first flagship shopping center in China's 2nd-tier cities of Hang Lung Plaza, the premier entertainment center of Lan Kwai Fong, the MIXC Wuxi of CR Land and the cultural tourism project of Wanda Group.



同时，无锡正着力打造的“一城一岛一带”工程（“城”是太湖新城，“岛”是马山国际旅游岛，“带”是古运河风光带）也给旅游休闲、度假养老业在锡投资发展提供了重大机遇。

Meanwhile, Wuxi is concentrating its efforts on building the “One-City, One-Island and One-Belt” Project (the City refers to Taihu New City, the Island refers to Mashan International Tourism Island and the Belt refers to the scenery belt of grand ancient canal), which also provides lots of investment opportunities for the development of tourism and entertainments, holiday and senior service industries in Wuxi.

产业无锡  
Industries

## 医疗养老

MEDICAL CARE &  
ELDER SERVICES

江苏省作为全国综合医改试点省份，对于社会资本举办康复、医养结合、护理院等资源短缺专业机构，将最大限度放宽规划限制，促进医疗机构与养老机构等加强合作，大力推进医养一体化。无锡市也鼓励各类资本投资医疗保健领域，放宽社会办医准入，实现我市医疗卫生投资主体多元化。

As a pilot of the national comprehensive health-care reform, Jiangsu government will maximally loosen restrictions on professional institutes with social-capital to participate in medical recovery, recuperation as well as in nursing and health-care fields, which are in a shortage of resources, to enhance the cooperation of medical institutions and retirement organizations to promote the integration of health care and recuperation vigorously. Wuxi will also encourage investments of various capitals in healthcare field and lift restrictions on social medical entry to realize the diversification of investors for medical service and health care.

2014年，无锡市获批全国养老服务业综合改革试点地区，养老服务市场全面对外资开放，并下放审批权限，简化审批手续，让外资享受同等优惠政策。

In 2014, Wuxi was approved as a pilot zone of national comprehensive reform on elder service industry. The elder service market will be fully open to foreign capitals since the government permit of examination and approval will be devolved and the approval process will be simplified to offer equal preferential policies with domestic ones.







投资无锡  
Investment

**高效透明的  
政府服务**  
HIGHLY-EFFECTIVE  
AND TRANSPARENT  
GOVERNMENT SERVICES

为进一步优化我市投资环境，全力聚焦重大项目，无锡市在招商引资、招才引智和项目建设等方面出台了一系列新的整体政策和产业政策。（相关政策请浏览[www.investinwuxi.com](http://www.investinwuxi.com)）

In order to optimize Wuxi's environment for investment and focus on significant projects, a series of new comprehensive policies and industrial policies in terms of investment promotion, import talents and construction of projects have come out. (For more details, please browse our website [www.investinwuxi.com](http://www.investinwuxi.com))

**投资服务机构:**

Investment Service Institutions:

无锡市招商局  
Wuxi Investment Promotion Bureau  
( [www.investinwuxi.com](http://www.investinwuxi.com) )

无锡市外商投资企业服务中心  
Wuxi Foreign-invested Enterprise Service Center

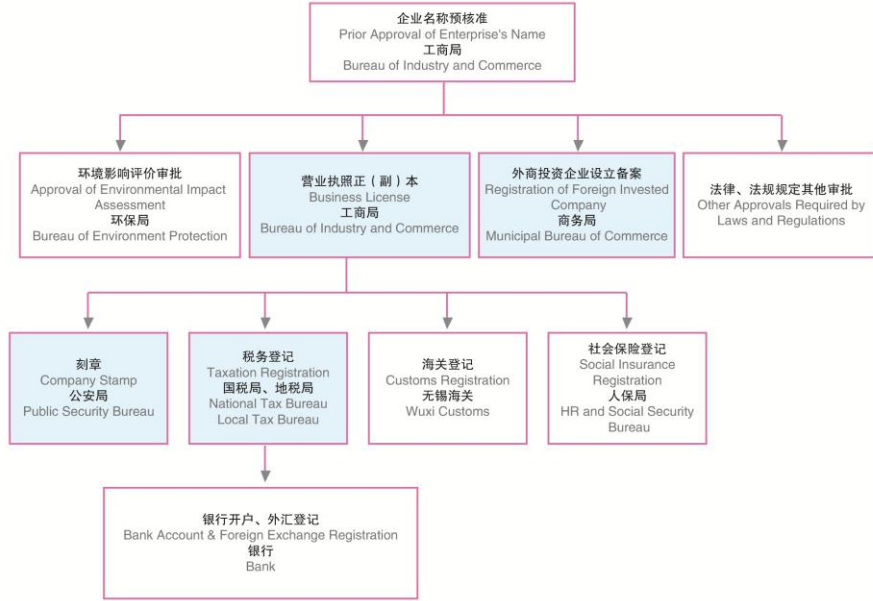
**外商投资企业一站式服务平台:**

One-Stop Service Platform for Foreign-invested Enterprises

无锡市行政服务中心  
The Administrative Service Center of Wuxi Municipal People's Government  
( [xzfw.chinawuxi.gov.cn](http://xzfw.chinawuxi.gov.cn) )

## ■ 在无锡设立公司 TO ESTABLISH A COMPANY IN WUXI

外商投资企业设立审批流程图  
FLOWCHART



**说明:**

1. 无锡市商务局针对重大或特殊项目设有“联办专窗”，蓝色背景标识的事项均可交由专窗统一办理。
2. 上述事项材料齐全，合计办结时间约十个工作日（此外商投资企业设立备案制度不适用于“负面清单”企业）。
3. 上述事项，投资者可自行办理，也可委托专业中介机构办理。
4. 全部事项办理地点：无锡市行政服务中心。

**Remarks:**

1. Wuxi Bureau of Commerce sets VIP Service Counter for key projects (Blue background-labeled issues can be submitted for one-stop service.)
2. Should all the required documents be provided, the procession duration for government approval is around 10 working days (This policy is not applied to Companies in “Negative List”.)
3. Above listed issues can be submitted by investors or with the assistance of professional intermediary organizations.
4. Venue: Wuxi Civic Service Center

地址：无锡市新金匮路1号市民中心12号楼

Address: Building 12, Wuxi Civic Center, No. 1 Xin Jin Kui Road, Wuxi City

## ■ 生活成本参考 LIVING COSTS

项目 Items	价格 Price	
单身公寓 (装修、带家具) Fully Decorated Apartment (Single Room)	1000元/月 – 2000元/月 RMB 1,000 – 2,000 Yuan/month	
三室两厅 (装修、带家具) Fully Decorated Apartment (Three bedrooms & 2 Living Rooms)	2000元/月 – 4000元/月 RMB 2,000 – 4,000 Yuan/month	
甲级写字楼 A-level Office Buildings	3元 – 5元/平方米/天 RMB 3 – 5Yuan/m <sup>2</sup> /day	
普通写字楼 General Office Buildings	0.8元 – 2.5元/平方米/天 RMB 0.8 – 2.5Yuan/m <sup>2</sup> /day	
出租车 Taxi	≤ 3 km	起步价10元 Base rate: RMB 10 Yuan
	> 3km	每公里2.28元 RMB 2.28 Yuan/km
公交车 Bus	空调车 Bus with A/C	RMB 2 Yuan
	非空调车 Bus without A/C	RMB 1 Yuan
地铁 Metro	RMB 2–6 Yuan	

\*无锡市应届毕业生租房补贴政策：博士800元/人/月、硕士600元/人/月、学士500元/人/月；期限暂定为两年。

Rental subsidies for fresh university graduates: With Doctor degree RMB 800 Yuan/person/month; with Master degree RMB 600 Yuan/person/month; with Bachelor degree RMB 500 Yuan/person/month. The term is tentatively fixed in two years.

## ■ 工资薪酬情况 SALARY

无锡市最低工资标准：1770元/月（不包含加班工资、津贴、国家规定的劳动者福利待遇等）

Minimum Salary Standard: RMB 1770 Yuan/Month (not including overtime payment, subsidies and welfare benefits according to national regulations.)



## ■ 企业经营要素价格参考

### COST OF ENTERPRISE OPERATION ITEMS

经营要素 Factors	价格 Price			
工商服务业用水 Water for business and commercial service use	一般行业4.2元/吨 RMB 4.2 Yuan /ton for general industry			
	八大行业（化工、医药、钢铁、印染、造纸、电镀、水泥、船舶等）5元/吨 RMB 5 Yuan/ton for Eight Industries ( Chemical Industry, pharmaceuticals industry, steel industry, printing and dyeing industry, paper-making industry, electroplating industry, cement industry, shipbuilding industry, etc )			
天然气 Natural gas	工业用气：2.91-3.2元/立方米 Gas for industrial use: RMB 2.91-3.2 Yuan/ m <sup>3</sup>			
	商业用气：2.91-3.35元/立方米 Gas for commercial use: RMB 2.91-3.35 Yuan/ m <sup>3</sup> 生活用气：2.5元/立方米 Gas for daily use: RMB 2.5 Yuan/ m <sup>3</sup>			
蒸汽 Steam	190元/吨（一季度价格，价格根据环渤海煤炭价格按季度调整） RMB190 Yuan/ton ( Price varies quarterly, in tandem with BSPI )			
大工业用电（非优待类） Power charge ( RMB/kwh )	平时 Normal ( 12:00-17:00, 21:00-24:00 )	峰时 Peak ( 8:00-12:00, 17:00-21:00 )	谷时 Valley ( 0:00-8:00 )	
	1-10kv	0.6601	1.1002	0.3200
	20-35kv	0.6541	1.0902	0.3180
	35-110kv	0.6451	1.0752	0.3150
	110kv-220kv	0.6301	1.0502	0.3100
	220kv and above	0.6151	1.0252	0.3050



投资无锡  
Investment

联系我们  
CONTACT US

无锡市招商局是无锡市人民政府设立、专门从事投资宣传、经贸招商活动组织策划和投资项目推介的非盈利性投资促进机构。

Wuxi Investment Promotion Bureau (WXIPB) is a non-profit investment promotion institution. On behalf of Wuxi Municipal Government, WXIPB is specialized in the municipal level investment publicity, events organization and project introduction.

#### 我们的服务：

1. 提供无锡投资环境、产业扶持政策等相关信息；
2. 协助投资者来锡开展考察、投资洽谈等活动；
3. 介绍合适的本地或海外合作伙伴，推动企业间项目对接；
4. 全程跟踪服务重大投资项目，提供项目咨询、企业选址等专业服务；
5. 协调解决外来客商投资项目运行过程中的困难和问题；
6. 协助无锡企业赴境外开展投资合作，为企业“走出去”提供信息咨询、对接交流、环境考察等服务。

1. Providing relevant information on investment environment and preferential policies.
2. Assisting investors from home and abroad to carry out in-site inspections and business negotiations.
3. Introducing appropriate local or overseas business partners, to facilitate project matching.
4. Following up major investment projects, providing professional services, such as project consultation, site selection, etc.
5. Coordinating the problems and difficulties of investors in the process of investment operation.
6. Assisting local enterprises in outbound investments with professional services like information consultation, communication and environment analysis.



**信息与海外联络部(境外投资促进部)**

Information & Overseas Liaison Department  
(Outbound Investment Promotion Department)  
0510-85617207 taijun\_jin@wxipb.gov.cn

**电子信息产业部(日韩部)**

Electronics and Information Technology Industry Department  
(Japan & Korea Department)  
0510-85617209 dan\_liu@wxipb.gov.cn

**机械装备产业部(美加部)**

Equipment Manufacturing Industry Department  
(U.S. & Canada Department)  
0510-85617223 Dee\_Di@wxipb.gov.cn

**高新技术产业部(欧洲部)**

High-New Technology Industry Department  
(European Department)  
0510-85617218 Jessica\_Zhu@wxipb.gov.cn

**服务业部(东南亚部)**

Tertiary Industry Department  
(South-east Asia Department)  
0510-85617212 Michael\_Qian@wxipb.gov.cn

传真(Fax): +86-510-85617227

网站(Website): [www.investinwuxi.com](http://www.investinwuxi.com)

地址: 中国江苏省无锡市滨湖区金融一街10号6楼  
(214121)

Address: Floor 6, Building 10, 1st Finance Avenue, Binhu  
District, Wuxi City, Jiangsu Province, P.R.C.

**驻北京商务代表处**

Representative Office in Beijing  
电话(Tel): 13812185276  
邮箱(E-mail): wesley@wxipb.gov.cn



轻扫微信二维码,  
了解更多无锡最新资讯

Please point your mobile phone at  
the QR (Quick Response) code,  
to learn more updated information  
about Wuxi.

投资无锡  
Investment

## 配套齐全的 载体

COMPREHENSIVE  
DEVELOPMENT  
CARRIERS

无锡共有6个国家级开发区，2个国家级综合保税区，8个省级开发区以及一批新兴产业Park园区，这些开放园区基础设施完备，环境优越，产业集聚，是无锡吸引跨国公司投资和发展新兴产业的核心区，对无锡经济社会的全面发展发挥着巨大的推动作用。

Wuxi has 6 national-level and 8 provincial-level economic development zones, 2 national-level comprehensive bonded zones and several featured parks on new emerging industries. All these industrial parks have comprehensive infrastructure facilities, excellent environment and industrial cluster of relevant enterprises, as the core area of attracting foreign investments and developing the new-normal economy, to give a push to the comprehensive social and economic development of Wuxi.

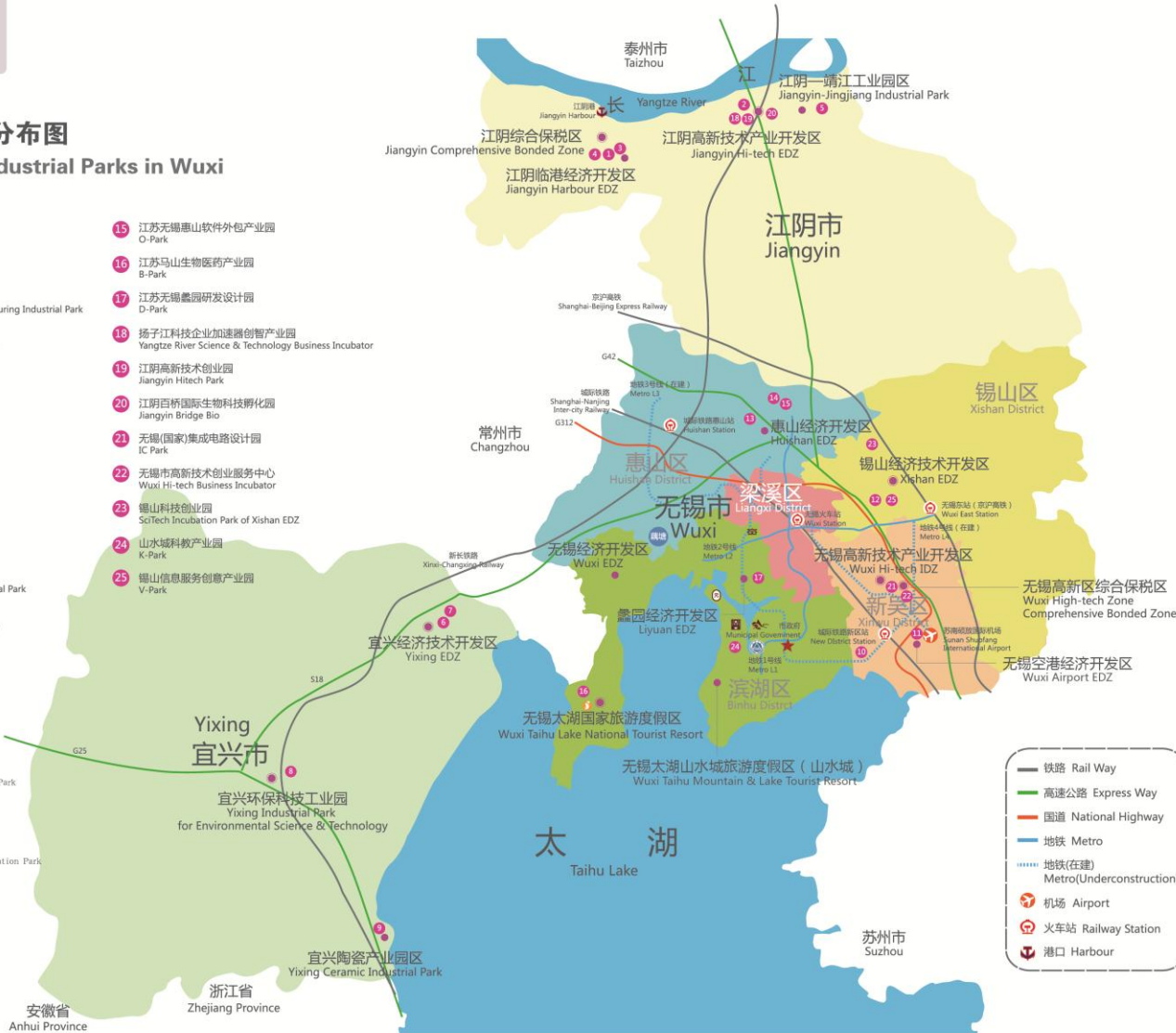
### 无锡市开发区特色产业园分布图

Map of EDZs and Featured Industrial Parks in Wuxi

- 1 江苏江阴新材料(金属)产业园  
Jiangsu Jiangyin New Material Industrial Park
- 2 江苏江阴上市公司总部集聚园  
Jiangsu Jiangyin Listed Company Headquarters Park
- 3 江苏江阴(节能环保)装备产业园  
Jiangsu Jiangyin Environmental Protection Equipment Manufacturing Industrial Park
- 4 江苏江阴工程机械产业园  
Jiangsu Jiangyin Lingang Engineering Machinery Industrial Park
- 5 江阴-靖江工业园区船舶产业园  
Jiangyin-Jingjiang Shipbuilding Industrial Park
- 6 江苏宜兴光电产业园  
Yixing Optoelectronic Industrial Park
- 7 江苏宜兴新能源产业园  
Yixing New Energy Industrial Park
- 8 江苏宜兴国际环保产业设计园  
H-Park
- 9 江苏宜兴新材料(陶瓷)产业园  
Jiangsu Yixing Ceramic Industrial Park
- 10 江苏无锡传感网产业园(无锡软件园)  
Jiangsu Wuxi Sensor Network Industrial Park (I-Park)
- 11 江苏无锡高新区生命科技产业园  
Jiangsu Wuxi Hi-tech Zone Life Science and Technology Industrial Park
- 12 江苏锡山台商科技工业园  
Jiangsu Xishan Taiwan Industrial Park of Science and Technology
- 13 江苏无锡惠山(风电)装备产业园  
W-Park
- 14 江苏无锡惠山生命科技产业园  
L-Park

- 15 江苏无锡惠山软件外包产业园  
O-Park
- 16 江苏马山生物医药产业园  
B-Park
- 17 江苏无锡蠡园研发设计园  
D-Park
- 18 扬子江科技企业加速器创客产业园  
Yangtze River Science & Technology Business Incubator
- 19 江阴高新技术创业园  
Jiangyin Hitech Park
- 20 江阴百桥国际生物科技孵化园  
Jiangyin Bridge Bio
- 21 无锡(国家)集成电路设计园  
IC Park
- 22 无锡市高新技术创业服务中心  
Wuxi Hi-tech Business Incubator
- 23 锡山科技创业园  
SciTech Incubation Park of Xishan EDZ
- 24 山水城科教产业园  
K-Park
- 25 锡山信息服务创意产业园  
V-Park

- 国家级开发区、综合保税区  
National Level EDZ  
Comprehensive Bonded Zone
- 省级开发区  
Provincial Level EDZ
- 灵山景区  
Lingshan Scenic Spot
- 锡惠公园  
Xihui Park
- 央视影视基地  
CCTV Film Base
- 太湖蠡园风景区  
Turtle Head Park
- 长兴荡湿地公园  
Chang Guangxi Wetland Park
- 江南大学  
Jiangnan University
- 藕塘职教园  
Ou Tang Vocational Education Park



- 铁路 Rail Way
- 高速公路 Express Way
- 国道 National Highway
- 地铁 Metro
- 地铁(在建) Metro(Underconstruction)
- 机场 Airport
- 火车站 Railway Station
- 港口 Harbour

## 无锡在长三角地区的位置 WUXI IN YANGTZE RIVER DELTA REGION

